



PREPARED BY  
**DIVISION OF REAL PROPERTY TAX SERVICES**  
 ERIE COUNTY, NEW YORK

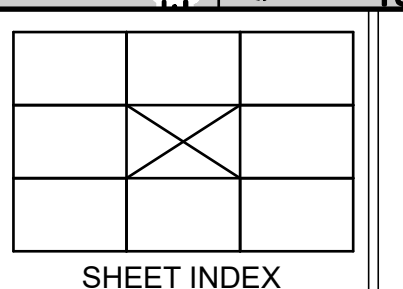
**NOTES**  
 THIS MAP WAS PREPARED FOR TAX PURPOSES ONLY AND IS NOT TO BE REPRODUCED OR USED FOR SURVEYING OR CONVEYANCES.  
 MAP PREVIOUSLY CONVERTED TO AUTOCAD DIGITAL FORMAT BY ANALYTICAL SURVEYS INC. IN COOPERATION WITH WEILER MAPPING INC. (1999)

REVISION TABLE		CHANGES OR ADDITIONS
DATE	MADE BY	
8/28/2018	LMO	BLK 2, 4 AND 151.06.2.1 INTO 1.1 ASSESSOR REQUEST
11/21/2012	DRT	BLK 3, 20 INTO 20.1 & 20.2
11/21/2012	DRT	BLK 3, 19 & 20 INTO 19 & 20
4/26/2010	DAB	BLK 3, ADDED 7.1, 7.2
5/8/1995	DFB	BLK 3, 25.1 - BLK 4, (1-28-28-39)

SPECIAL DISTRICTS	
SCHOOL	ORCHARD PARK CENTRAL SCHOOL DISTRICT
FIRE	ORCHARD PARK FIRE DISTRICT
SEWER	ERIE COUNTY SEWER DISTRICT NO 3
WATER	ORCHARD PARK WATER DISTRICT NO 15
DRAINAGE	ORCHARD PARK SEWER DISTRICT NO 18

LEGEND	
PROPERTY LINE	--- (Solid line)
ORIGINAL SUBLOT LINE	- - - (Dashed line)
RAILROAD	==== (Thick solid line)
STREAM OR DITCH	~~~~~ (Wavy line)
ROAD OR RAILROAD BNDY COUNTY LINE	- - - - - (Long dashed line)
TOWN LINE	--- (Dashed line)
VILLAGE LINE	- - - (Dashed line)
BLOCK LIMIT	--- (Dashed line)
GREAT LOT LINE	--- (Dashed line)
SCHOOL DISTRICT LINE	--- (Dashed line)
WATER DISTRICT LINE	--- (Dashed line)
SEWER DISTRICT LINE	--- (Dashed line)
FIRE DISTRICT LINE	--- (Dashed line)
OWNER COMMON OWNER	--- (Dashed line)
TAX MAP BLOCK NO.	--- (Dashed line)
TAX MAP PARCEL NO.	--- (Dashed line)
FILED PLAN LOT NO.	--- (Dashed line)
GREAT LOT NO.	--- (Dashed line)

CALCULATED ACREAGE	
DEED ACRES	7.5 A(C)
SCALED DIMENSION	115.4
SCALED DIMENSION (CHECKED)	743.25(S)
DEED DIMENSION (CENTER LINE)	173.33
COORDINATE LOCATOR	173.33



TAX MAP  
**TOWN OF ORCHARD PARK**  
 ERIE COUNTY, NEW YORK  
 TOWNSHIP 10  
 RANGE 7  
 GRAPHIC SCALE  
 1" = 100'  
 MAP DATE: 5/22/2023