



PREPARED BY  
**DIVISION OF REAL PROPERTY TAX SERVICES**  
**ERIE COUNTY, NEW YORK**  
 MAP CONVERTED TO GIS FORMAT BY BERGMANN ASSOCIATES (2011)  
 ORIGINAL MAP PREPARED BY AERO SERVICE (1981)

**NOTES**  
 THIS MAP WAS PREPARED FOR TAX PURPOSES ONLY  
 AND IS NOT TO BE REPRODUCED OR USED FOR  
 SURVEYING OR CONVEYANCES.  
 MAP PREVIOUSLY CONVERTED TO AUTOCAD DIGITAL FORMAT  
 BY ANALYTICAL SURVEYS INC. IN COOPERATION  
 WITH WEILER MAPPING INC. (1999)

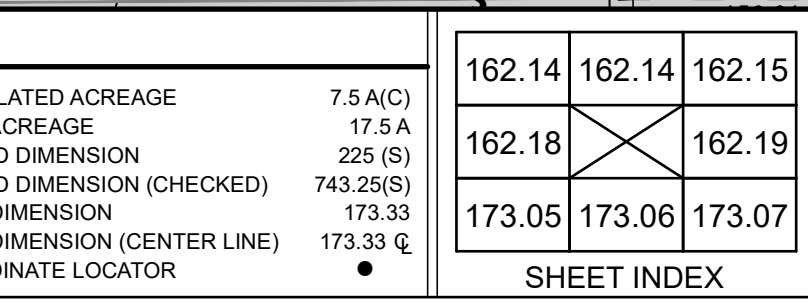
REVISION TABLE	
DATE	MADE BY
8/28/2020	LMO
9/18/2014	ARG
8/12/2014	ARG
8/14/2012	JCS
2/19/2010	DAB

SPECIAL DISTRICTS	
SCHOOL	DRAINAGE
ORCHARD PARK CENTRAL SCHOOL DISTRICT	ERIE COUNTY SEWER DISTRICT NO 3
ORCHARD PARK FIRE DISTRICT	ORCHARD PARK SEWER DISTRICT NO 18
ORCHARD PARK WATER DISTRICT NO 1	ORCHARD PARK WATER DISTRICT NO 15

LEGEND	
PROPERTY LINE	TOWN LINE
ORIGINAL SUBLOT LINE	VILLAGE LINE
RAILROAD	GREAT LOT LINE
STREAM OR DITCH	SCHOOL DISTRICT LINE
ROAD OR RAILROAD BNDY	WATER DISTRICT LINE
COUNTY LINE	SEWER DISTRICT LINE
	FIRE DISTRICT LINE
	DEED ACRES COMMON OWNER
	TAX MAP BLOCK NO.
	TAX MAP PARCEL NO.
	FILED PLAN LOT NO.
	GREAT LOT NO.

CALCULATED ACREAGE	
DEED ACRES	7.5 A(C)
175.4	175.4
743.25(S)	743.25(S)
173.33	173.33
173.33	173.33
173.33	173.33

SHEET INDEX	
162.14	162.14
162.15	162.15
162.18	162.19
173.05	173.07



TAX MAP  
**TOWN OF ORCHARD PARK**  
 ERIE COUNTY, NEW YORK  
 TOWNSHIP 09  
 RANGE 7  
 GRAPHIC SCALE  
 1" = 100'  
 MAP DATE: 5/22/2023